

Mobile Device Installation Guide



TABLE OF CONTENTS

iOS Devices (Apple)	2
Install.....	2
Setup	3
Use/Settings	6
Android Devices (Not Apple)	10
Install.....	10
Setup	12
Use/Settings	14

IOS DEVICES (APPLE)

ICANotes is compatible with almost every Mac iOS device, including iPad and iPhone. Please follow these instructions to connect to your ICANotes account through your iOS device.

Note: If you are currently setup for and using the web-based login, you do not need to download any additional apps to access your account from a mobile device. Simply open your phone's browser and navigate to <http://ehr.icanotes.com> to login.

INSTALL

From your home screen, access the App Store



In the search bar, type and search for 'Microsoft RDP'

Search

Q Games, Apps, Stories, and More



Today



Games



Apps



Arcade



Search

Tap **Get** to download the app to your phone. If you've previously downloaded a version of the Microsoft Remote Desktop to your iPhone, you may instead see the cloud icon. Tap to download.

Q microsoft rdp



Cancel

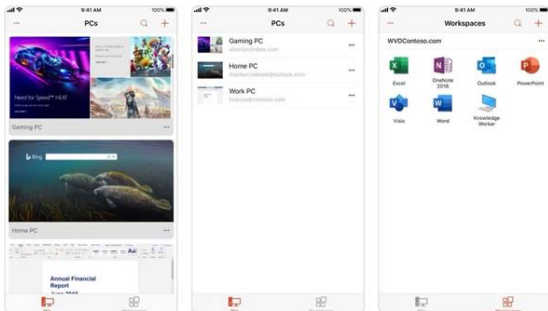


Microsoft Remote Desktop

Work from anywhere

★★★★☆ 910

GET



Today



Games



Apps

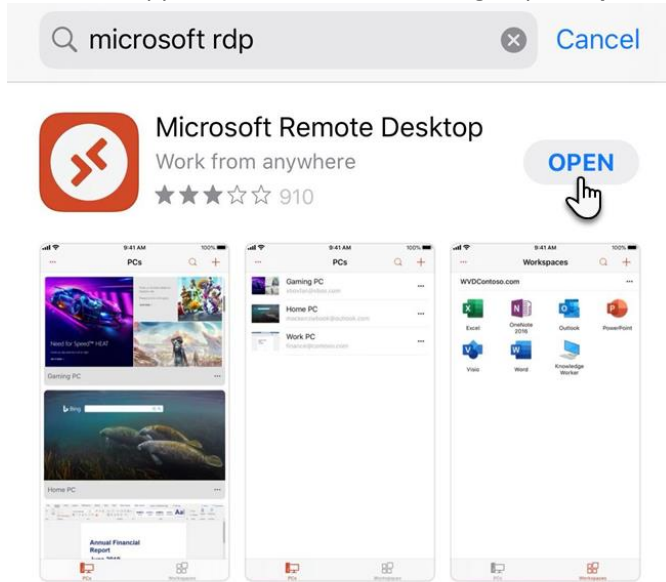


Arcade



Search

When the app has finished downloading, tap to **Open**



SETUP

The first time you open the app, you may be prompted with options to allow it to access Bluetooth, your microphone, and camera. Click Continue.

App Store 8:30 AM 94%

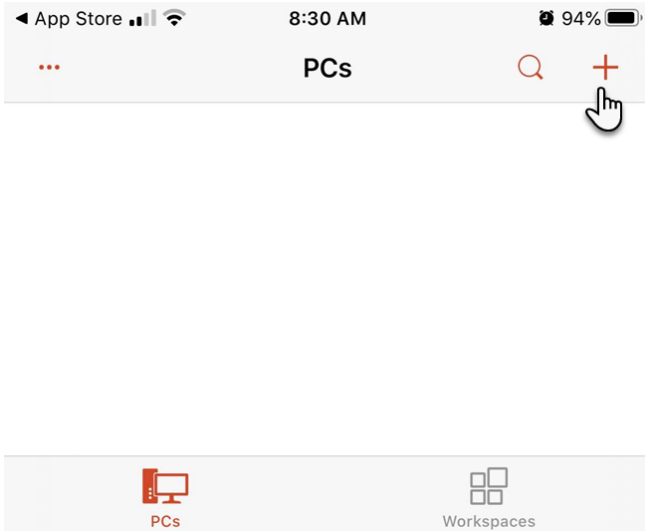


We need to request access to Bluetooth, your microphone and camera

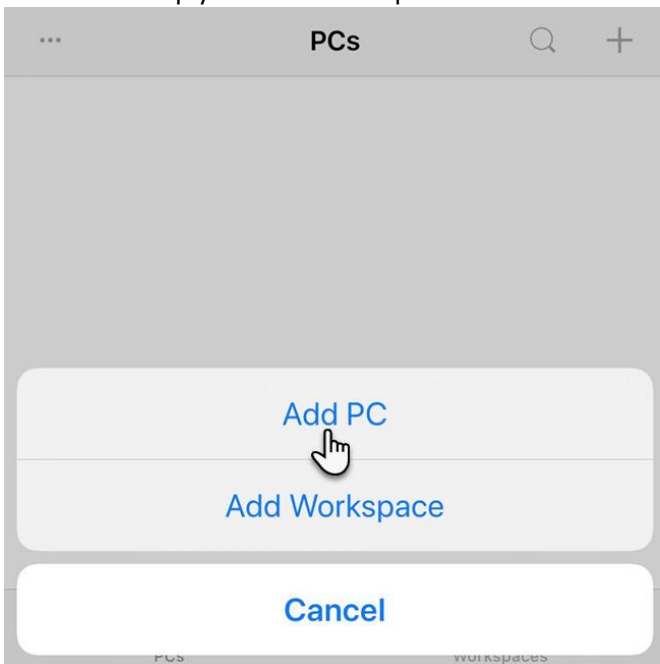
Bluetooth access is required to communicate with input devices. Access to your microphone and camera is required to use them in a remote session. You can change these permissions in iOS settings at any time.

Continue

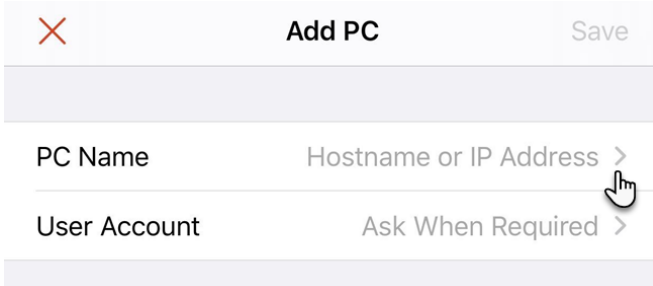
The main app screen will appear empty when you first open Microsoft Remote Desktop. To add a connection to your ICANotes account, tap the + button at the top-right of your screen



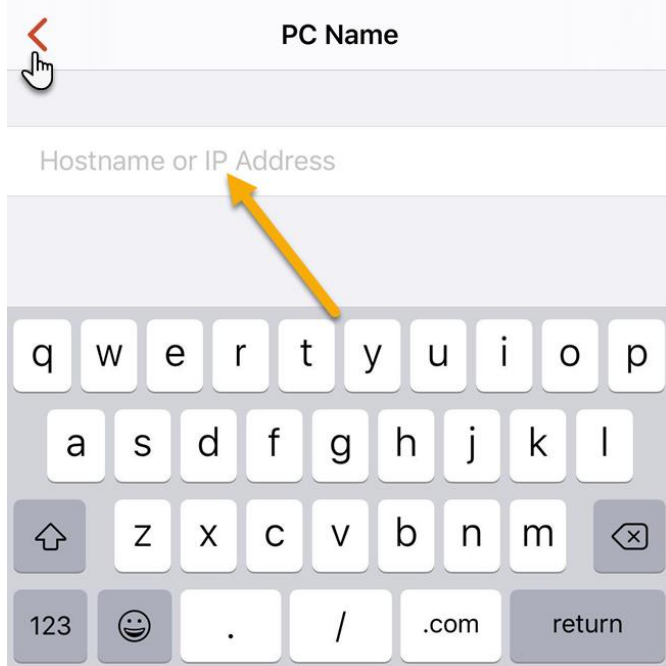
In the next step you'll have the option to Add PC or Add Workspace. Tap to **Add PC**.



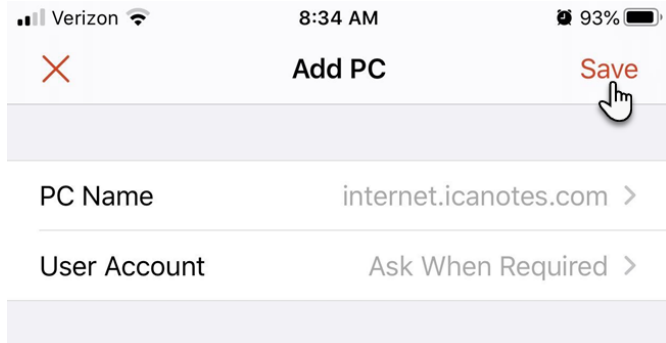
In the Add PC screen, tap the > arrow next to *Hostname or IP Address*



Next, type the following address into the *Hostname or IP Address* field: **internet.icanotes.com**



Tap the < arrow at the top left of your screen to return to the previous step. You'll now see the **PC Name** populated with *internet.icanotes.com*. Tap to **Save**.

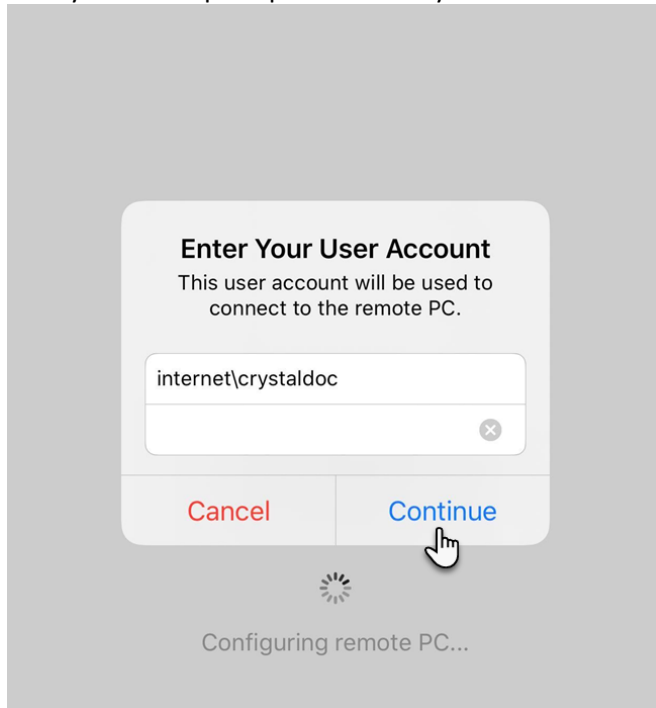


After tapping Save, you'll be returned to the main app screen where you will now see a connection box for *internet.icanotes.com*

To login, tap the connection box on your screen.



Now you will be prompted to enter your ICANotes credentials.



Enter the domain and your ICANotes username in the format specified on-screen. This will look like: *internet\yourusername*.

Make certain you are using the correct character (\ instead of /). You will need to tap into the special characters keyboard in order to find the correct key. To find this character, tap into the numerical keypad by tapping '123'



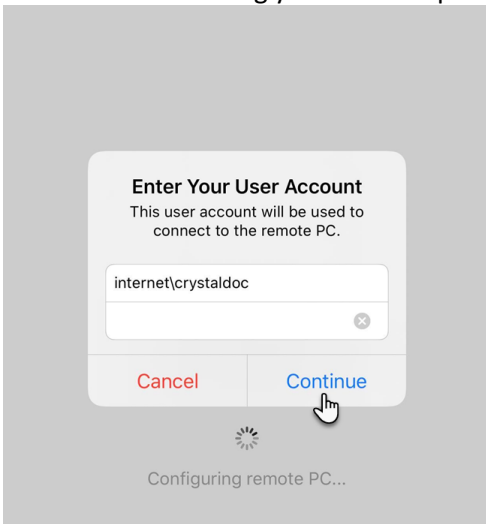
Then tap into the special characters keyboard by tapping #+=



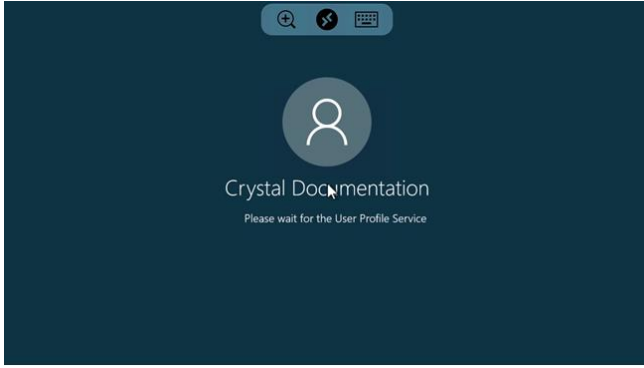
The correct key is highlighted in the image below:



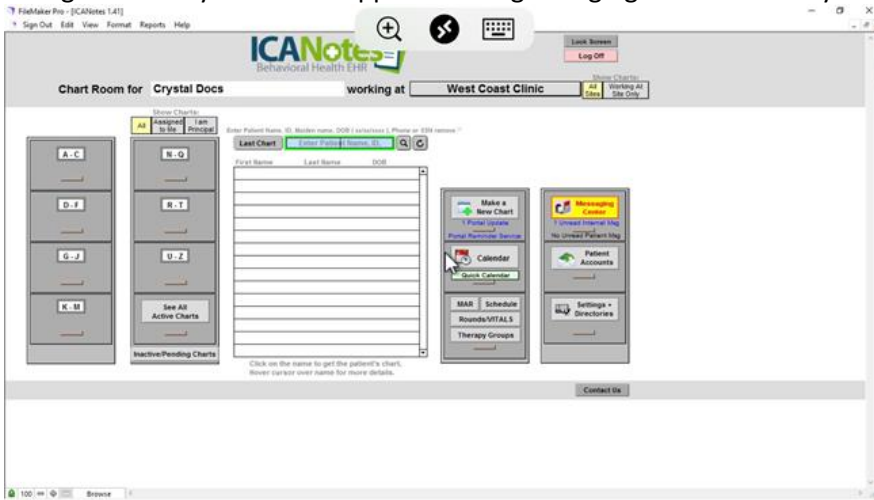
Proceed with entering your account password following your username, then tap to **Continue**





With your credentials entered correctly, the app will connect to your ICANotes account.




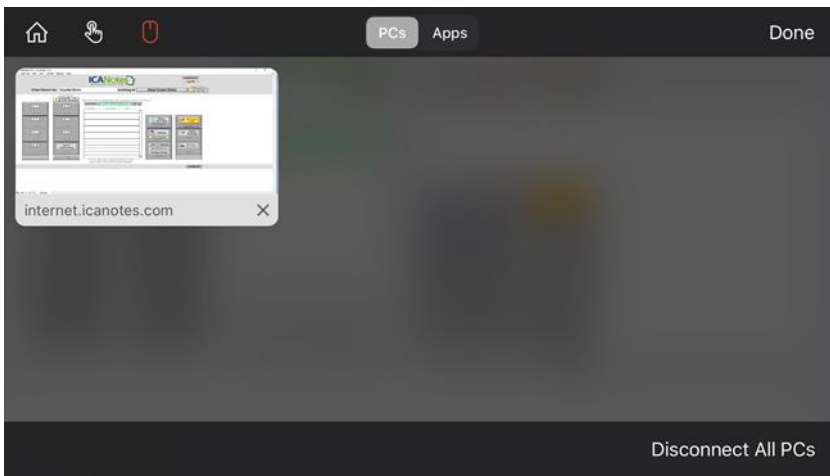
As your account loads to the Chart Room (or Clinical Reminder Sheet), you'll see new buttons appear at the top center of your screen. These buttons allow you to zoom in on your work areas, bring up the keyboard, or make some functional changes to how you use the app – including changing the interactivity from mouse to finger mode.



Tap the plus icon  to zoom in/make your screen larger.

Tap the keyboard icon  to display your phone's internal keyboard. In the work areas of the app where you would normally type, the keyboard should appear manually. However if it does not, tapping the icon will display the keyboard.

Tap the two arrows icon  to open additional settings, including touch and mouse interaction. Doing so will present you with the following screen:



When you first install the Microsoft RDP app, the default input setting may already be set to mouse mode, denoted by the



mouse icon. In this mode, your finger is used as the 'mouse' to skate around on the screen, then you tap to 'click'. To change to finger input, which allows you to simply tap to select (use the app as you ordinarily use the touch-screen input

on your phone), click the finger icon in the settings menu



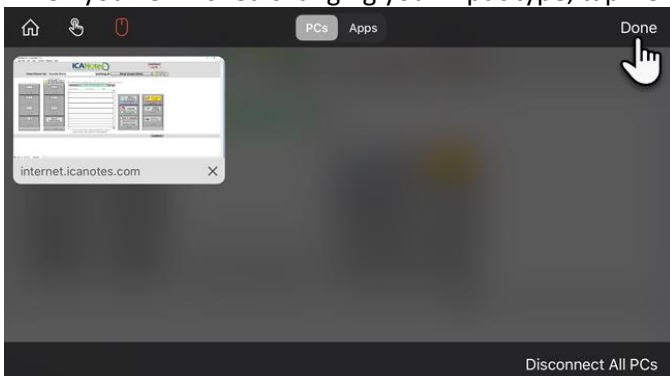
Tapping the home icon will take you to a screen where you can see your active session and other PC connections, and does not log you out of your account.

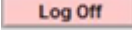


Tap the arrow icon to return to the previous screen.



When you've finished changing your input type, tap **Done** to return to your ICANotes session.



To logout of your ICANotes session, tap the pink **Log Off**  button at the top right of the Chart Room. Merely closing the app will not properly log out your ICANotes account and should be avoided.

ANDROID DEVICES (NOT APPLE)

ICANotes is compatible with almost every Android mobile device. Please follow these instructions to connect to ICANotes through your mobile device.

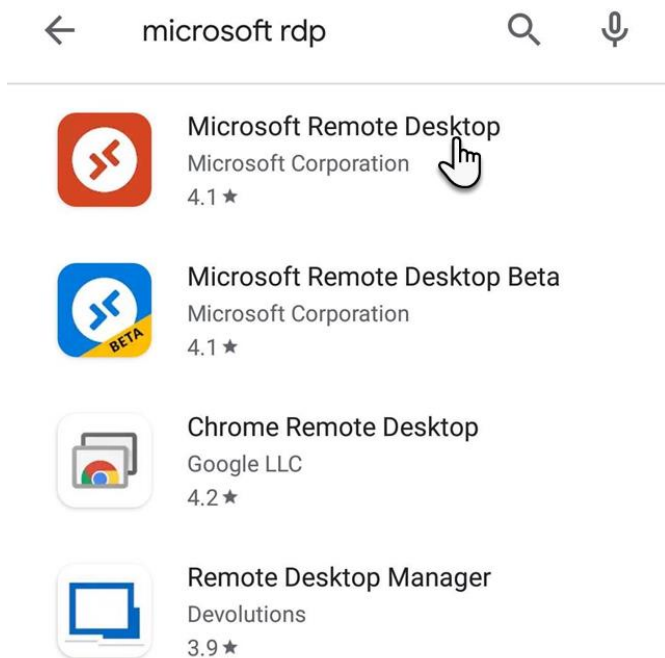
Note: If you are currently setup for and using the web-based login, you do not need to download any additional apps to access your account from a mobile device. Simply open your phone's browser and navigate to <http://ehr.icanotes.com> to login.

INSTALL

Start by accessing the Play Store from your device.



In the search bar at the top of the Play Store, search for 'Microsoft RDP'. Tap to select the Microsoft Remote Desktop app made by the Microsoft Corporation.



Tap to install the app to your device.



Microsoft Remote Desktop

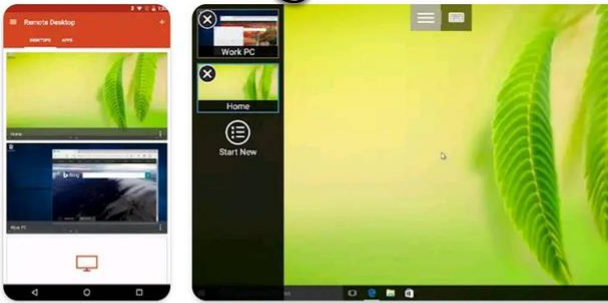
Microsoft Corporation

4.1★
107K reviews

10M+
Downloads

E
Everyone ⓘ

Install



About this app →

Microsoft Remote Desktop provides remote access to Windows desktops and apps.

Once installed, open the Microsoft RDP app by tapping **Open**, or by accessing the app shortcut from your home/menu screen.



Microsoft Remote Desktop

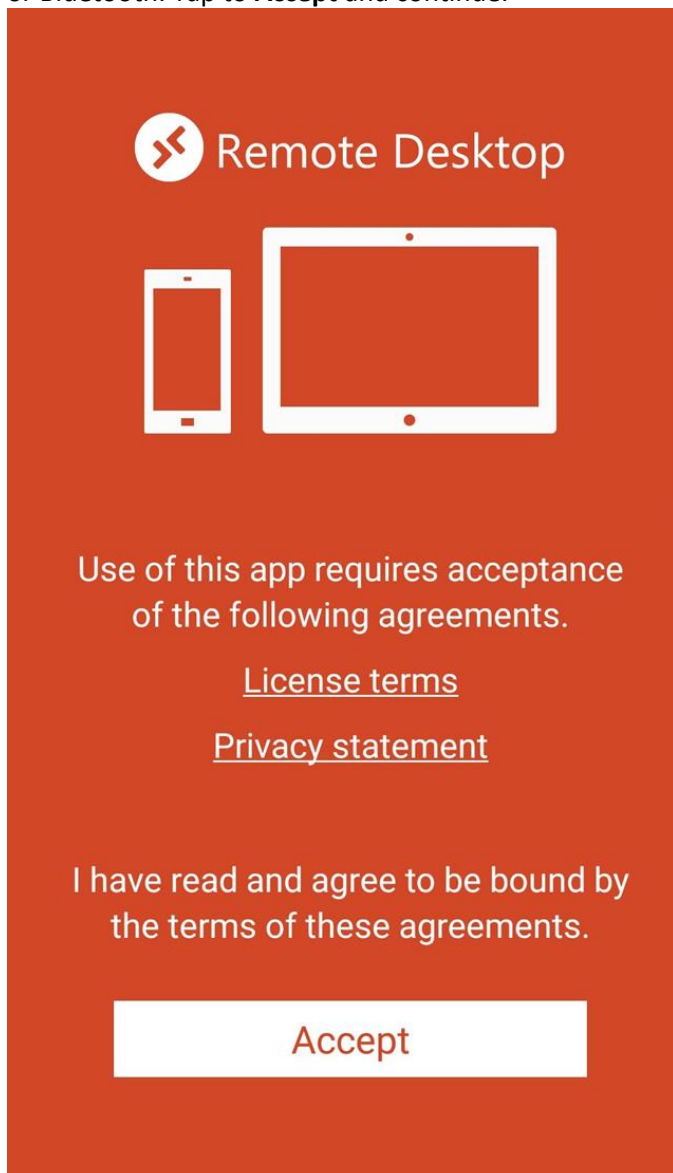
Microsoft Corporation

Uninstall

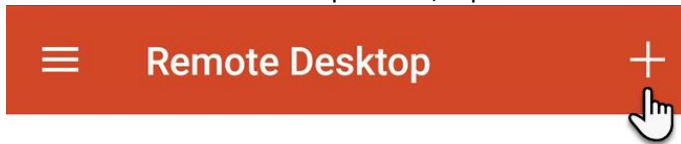
Open



When initially opening the app, you may be prompted to accept a user agreement, or to allow access to your microphone or Bluetooth. Tap to **Accept** and continue.



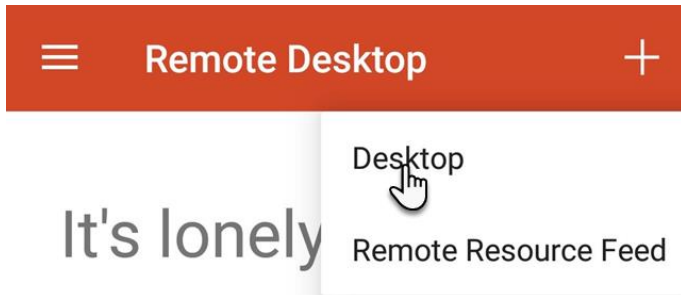
In the main Remote Desktop screen, tap the + icon at the top right of the app to add the connection to ICANotes.



It's lonely here.

To get started, add the remote desktop that you want to connect to using this device. You can also add remote resources to work with apps and desktops your administrator has set up for you.

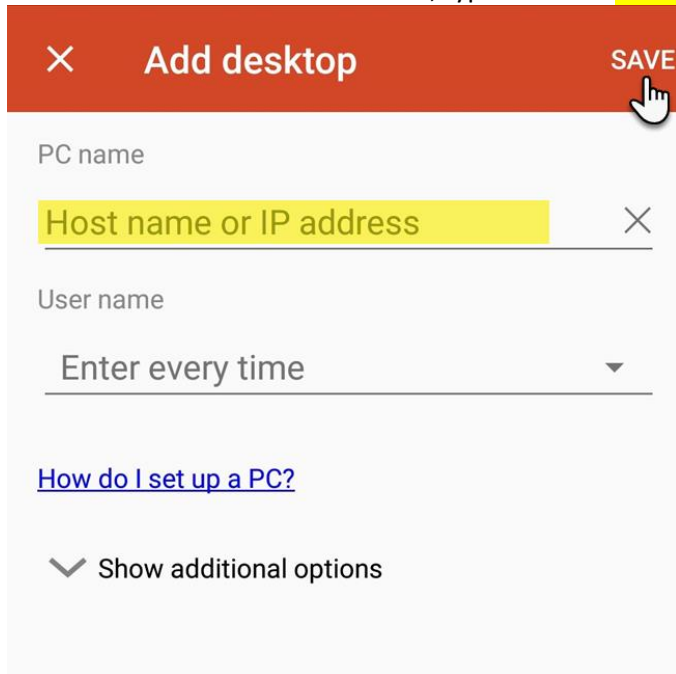
When prompted, tap to select **Desktop**



It's lonely

To get started, add the remote desktop that you want to connect to using this device. You can also add remote resources to work with apps and desktops your administrator has set up for you.

In the *Host name or IP address* field, type to enter: **internet.icanotes.com**. Then tap to **Save**.



×

Add desktop

SAVE

PC name

Host name or IP address

User name

Enter every time

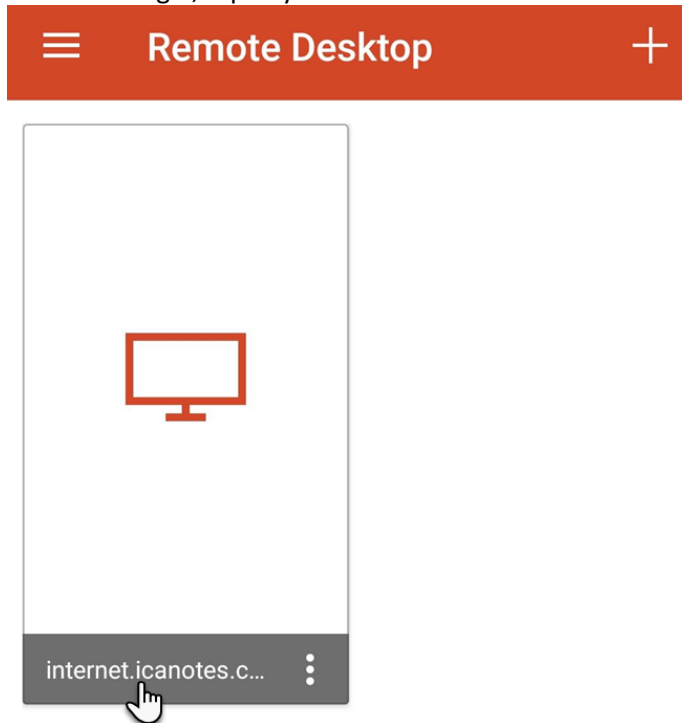
[How do I set up a PC?](#)

✓ Show additional options

You'll be returned to the main Remote Desktop screen, where a new connection box will appear for your ICANotes account.

USE/SETTINGS

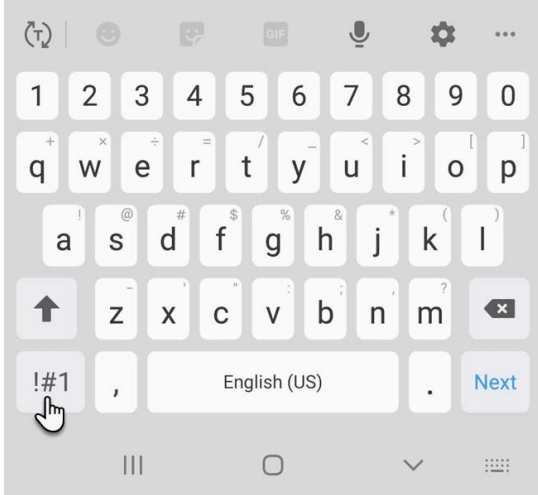
To initiate login, tap anywhere on the connection box.



You'll next be prompted to provide your account domain\username and password. Your user name will be entered as internet\yourusername (substituting 'yourusername' for your own assigned username). Be sure to use the correct character between the domain and username.

Depending on your device, the \ key will be located in the special characters/symbols keyboard. You may need to first tap to access the numerical keypad, then tap again to access the special characters keyboard.

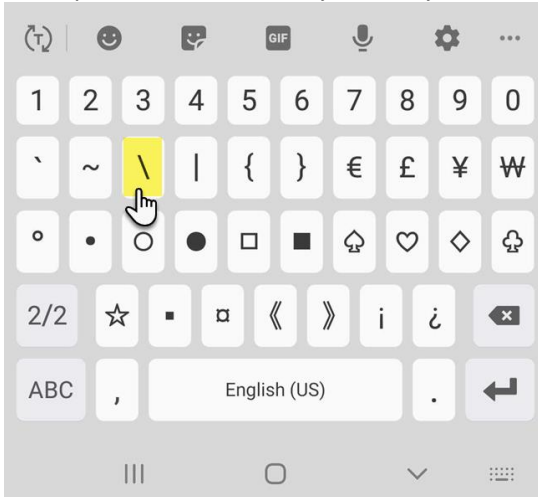
Tap to access additional keyboard offerings, as seen in the screenshot below



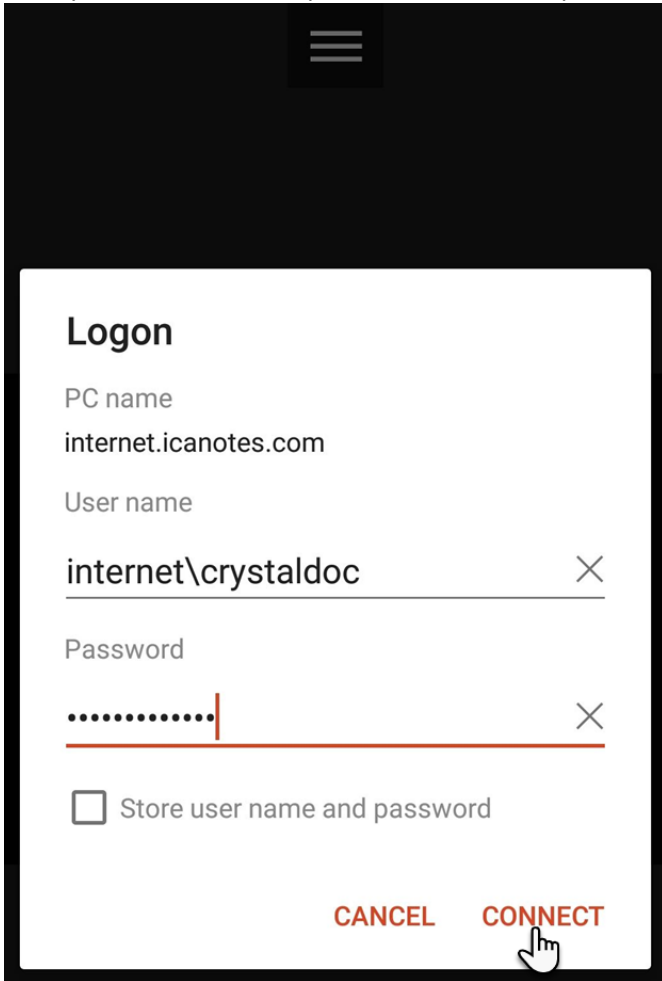
Some devices may contain two symbols/special characters keyboards, which you can access by tapping the appropriate button



Example: the backslash key in the symbols keyboard



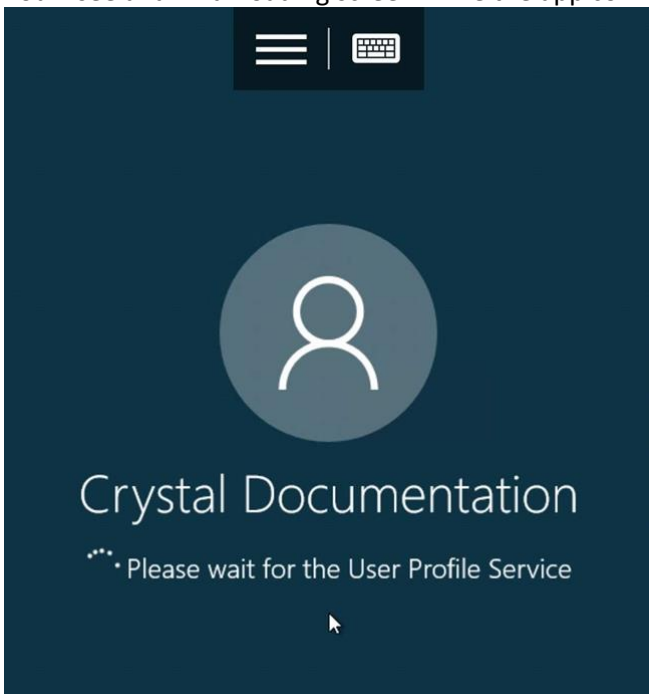
With your username and password entered, tap to **Connect**.



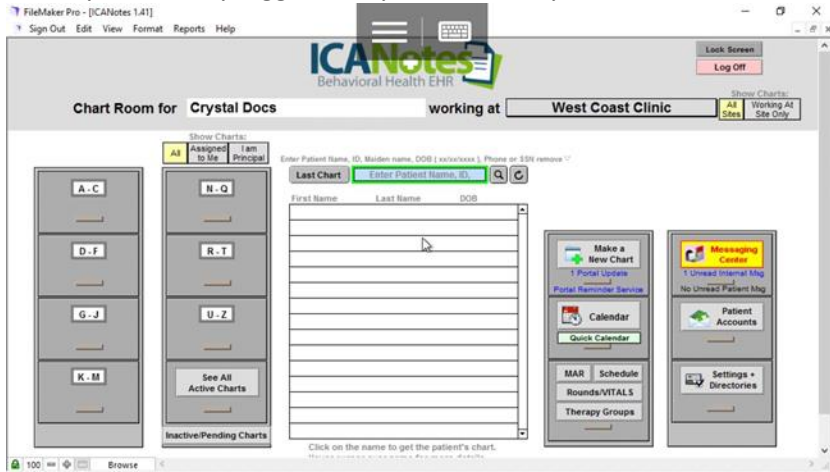
The screenshot shows a 'Logon' dialog box with a white background and a black border. At the top left is a hamburger menu icon. The dialog contains the following fields and controls:

- PC name:** internet.icanotes.com
- User name:** internet\crystaldoc (with a clear 'X' button)
- Password:** masked with dots (with a clear 'X' button)
- Store user name and password
- Buttons: **CANCEL** and **CONNECT** (with a hand cursor pointing to it)

You'll see a familiar loading screen while the app connects to your ICANotes account.



When you are fully logged into your account, you will notice two additional buttons located at the top center of the app.

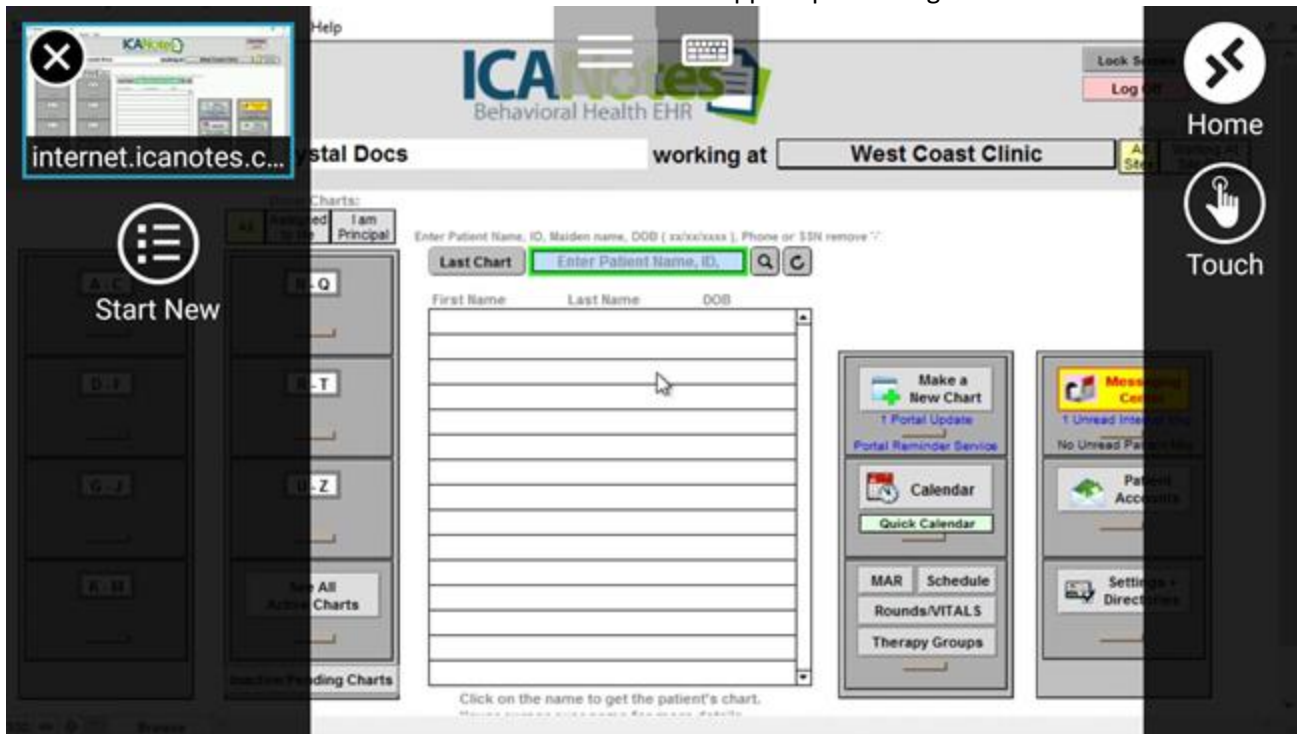


Closer detail:



When inside the work areas of a note, the keyboard should automatically appear for you, ready to type. However, tapping the keyboard icon to the right will open your phone's internal keyboard. This can be useful if you mistakenly close the keyboard before you've finished writing the text in your note, for example.

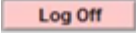
The menu icon located to the left can be used to access the app's input settings.



When you first install and setup the app, you'll be set to 'mouse' mode by default. This method makes your finger the 'mouse', which you can then skate around on screen as you would with a desktop mouse.

To change to 'touch' input – which will allow you to interact with the Remote Desktop app the same as you would any other app or interface on your device – simply tap the 'Touch' option. Your mouse input will immediately change, no log out required.

Tap 'Home' to return to the home screen.

To logout of your ICANotes session, tap the pink **Log Off**  button at the top right of the Chart Room. Merely closing the app will not properly log out your ICANotes account and should be avoided.

If you have questions or need assistance with installing Microsoft Remote Desktop to your mobile device, please call Support at (443) 569-8778, or email us at ticket@icanotes.com.